

PARTNERSHIP

- Warsaw University of Technology (Poland) – coordinator
- Edumotiva – European Lab for Educational Technology (Greece)
- FMD- Fondazione Mondo Digitale (Italy)
- AIJU - Technological Institute for children's products & leisure (Spain)
- I Liceum Ogólnokształcące im. Marii-Skłodowskiej – Curie w Sokolowie Podlaskim (Poland)
- 6o EK A' PEIRAIA (Greece)

& associated schools in Poland, Greece, Italy and Spain

MAKERS HOLO

THE HOLOMAKERS PROJECT

THE HOLOKIT MANUAL





**MOTIVATING SECONDARY SCHOOL STUDENTS TOWARDS
STEM CAREERS THROUGH HOLOGRAM MAKING AND
INNOVATIVE VIRTUAL IMAGE PROCESSING PRACTICES
WITH DIRECT LINKS TO CURRENT RESEARCH AND
LABORATORY PRACTICES**

CONTACT:

 Website: <http://holomakers.eu>

 Email: info@holomakers.eu

 Twitter: [@holomakers_eu](https://twitter.com/holomakers_eu)

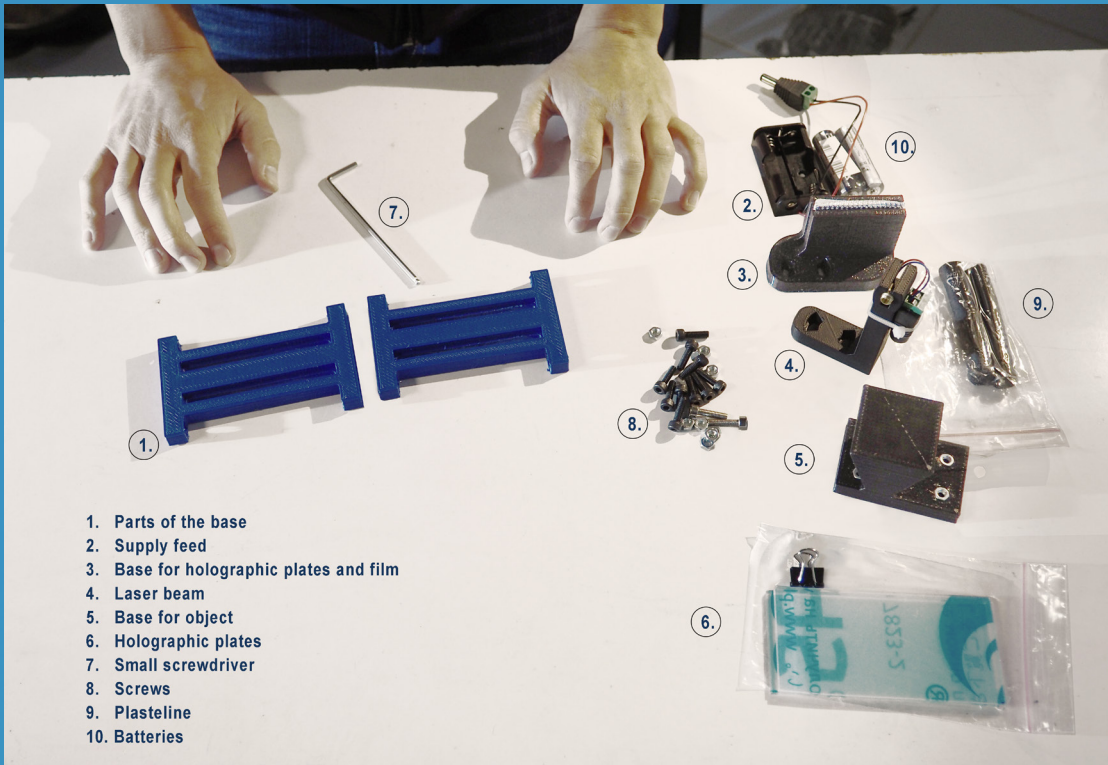
 Facebook: [@holomakers](https://facebook.com/holomakers)



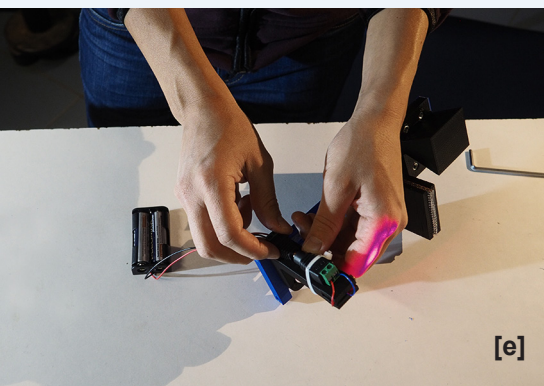
This project has been funded with support from the European Commission under the Erasmus+ Programme (2017-1-PL01-KA201-038420). This document reflects the views only of the author, and the Commission cannot be held responsible for any use which may be made of the information contained therein.

NOVEMBER 2017 - OCTOBER 2019

ERASMUS+ KA2 2017-1-PL01-KA201-038420



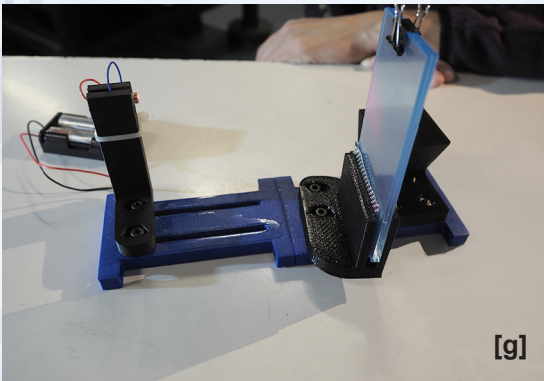
1. Parts of the base
2. Supply feed
3. Base for holographic plates and film
4. Laser beam
5. Base for object
6. Holographic plates
7. Small screwdriver
8. Screws
9. Plasteline
10. Batteries



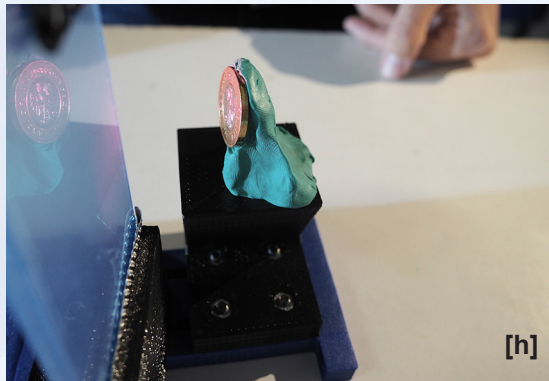
[e]



[f]



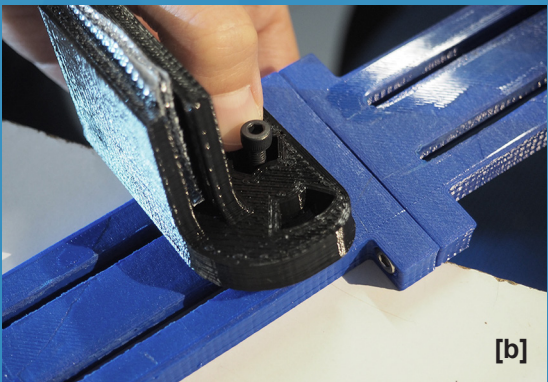
[g]



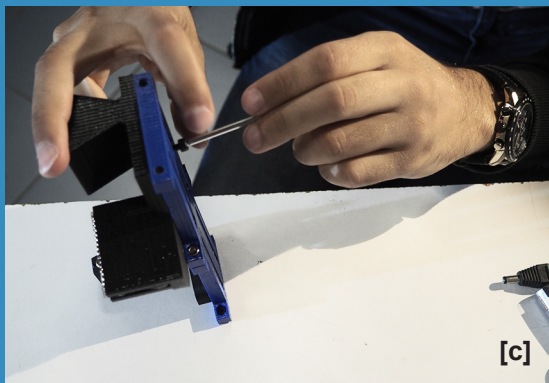
[h]



[a]



[b]



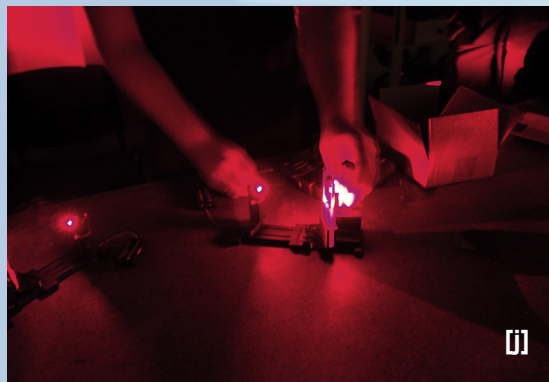
[c]



[d]



[i]



[j]

INSTRUCTIONS

Use the screwdriver, as well as screws and nuts, to connect the parts of the base at their assembling point [a]. Repeat the same step to add the base for plexiglass plates, the base for objects as well as the laser diode on the connected base [b, c, d]. Then - and after adding the batteries - you can connect the supply feed to the laser diode [e]. Next, place the plexiglass plates [g]. Remove the transparent foil the first time you will use the kit [f]. Finally, place the object to be holographed. Use plasticine to stabilize or/and adjust the position of the object [h].

After finalizing your setup do not forget to place the shutter between the laser and the plates [i]. Check the levels of ambient light before starting the holographic process [j] and enjoy the results!